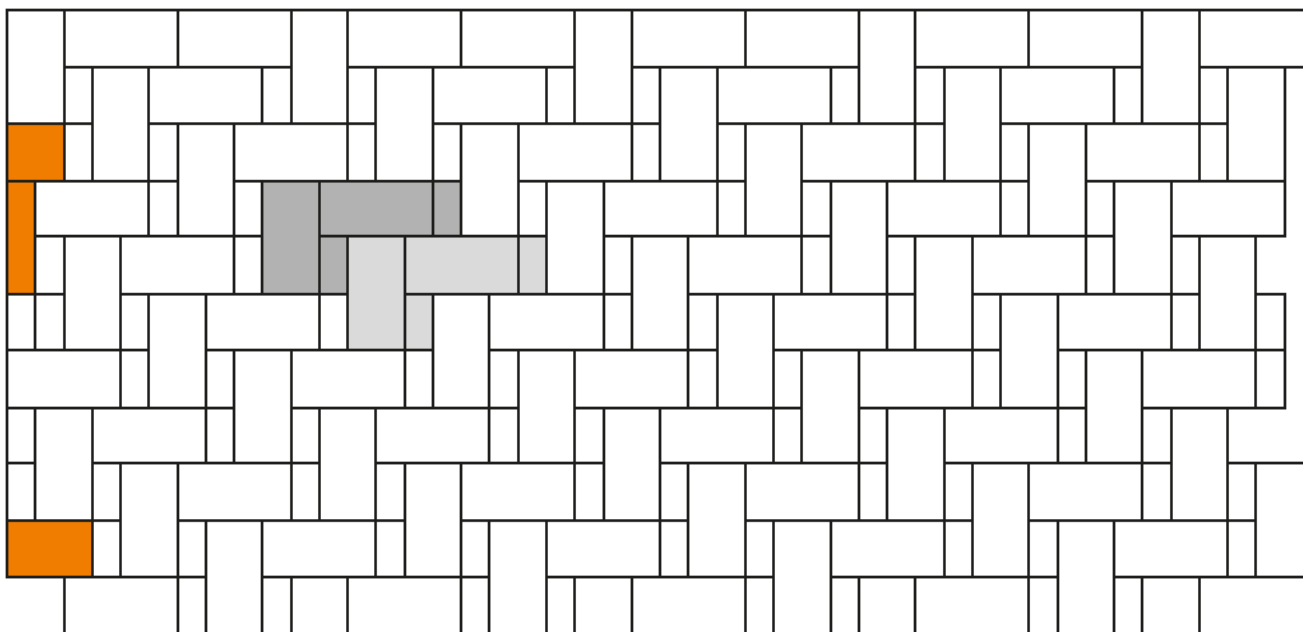


Steinsystem

Estara, EstaraFeel, Quintano




Verlegeart

Wilder Verband mit 2 Formaten



Legende

Maßstab 1:40

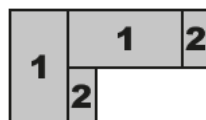
-  = verlegte Fläche
-  = Systemverband/Verlegeeinheit
-  = geschnittene Steine

Steinformat/Steintypen



Stein 1 = 60 x 30 x 8 cm
Stein 2 = 30 x 15 x 8 cm

Verlegeschema



Materialbedarf je m²

Format 60 x 30 cm = ca. 4,45 Stück je m²
Format 30 x 15 cm = ca. 4,45 Stück je m²



Stein 1
60 x 30 cm



Stein 2
30 x 15 cm