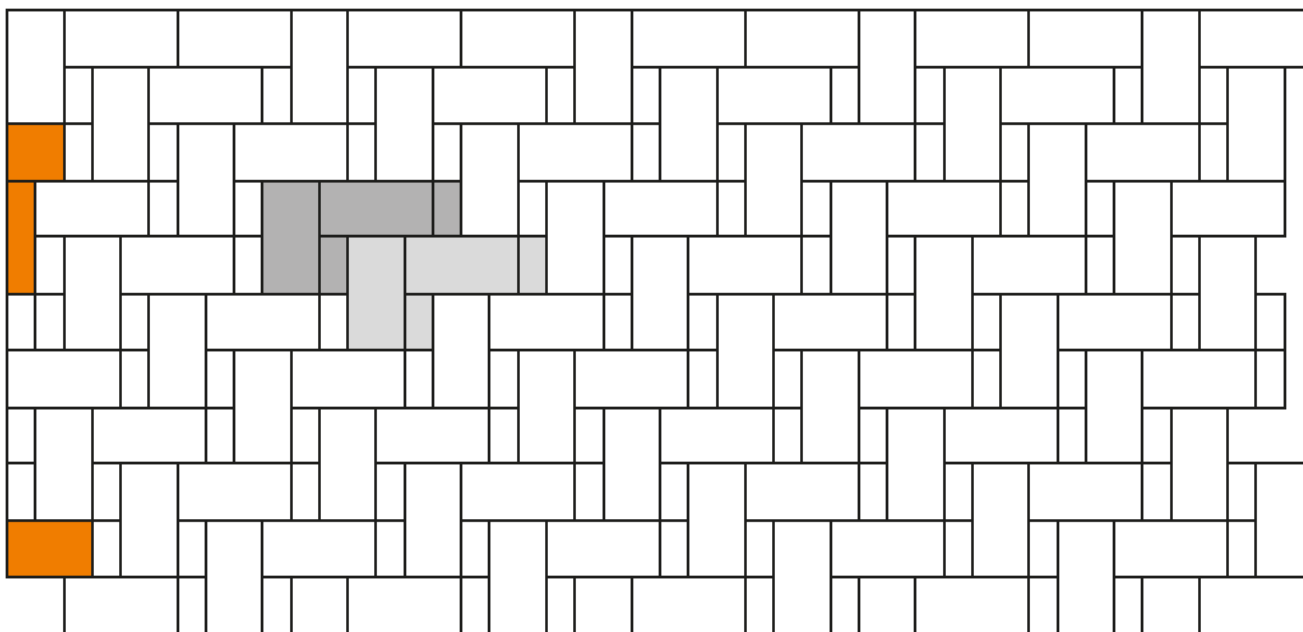


Steinsystem

Quintano




Verlegeart

Wilder Verband mit 2 Formaten



Legende

Maßstab 1:40

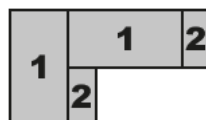
-  = verlegte Fläche
-  = Systemverband/Verlegeeinheit
-  = geschnittene Steine

Steinformat/Steintypen



Stein 1 = 60 x 30 x 8 cm
Stein 2 = 40 x 20 x 8 cm

Verlegeschema



Materialbedarf je m²

Format 60 x 30 cm = ca. 3,84 Stück je m²
Format 40 x 20 cm = ca. 3,84 Stück je m²



Stein 1
60 x 30 cm



Stein 2
40 x 20 cm